

In cooperation with the Faculty of Architecture, Building and Planning at the University of Melbourne, Asymptote Architecture is excited to present its design strategy for the new faculty building. Asymptote's design for the new faculty building will be an outstanding example of 21st-century architecture and a valuable addition to the city's architectural portfolio. With Asymptote's commitment to innovation and quality design, the firm's vision for the new faculty building is an unparalleled design outfitted with leading-edge technologies that will add to the University's vibrant, contemporary environment while still being respectful of its context. In keeping with the life of the University, the design of the new faculty building will resonate with the campus in such a way as to generate a progressive expression for the future of the faculty and a positive addition to the public life of the university.

Due to the complexity of the program and the site, the design of the new faculty building requires an integrated approach that addresses the project's architectural challenges in unison and finds innovative solutions as a whole. We see the issues of the faculty building's design as completely interrelated, particularly the issue of scale. From the scale of the campus, to the scale of the individual faculty, to the scale of the interior design studio, Asymptote's integrated work method enables it to handle the sophisticated design challenges of these various scales as integrated concepts. By exploiting their inter-connectedness, Asymptote will provide a cutting-edge, 21st-century design for the faculty building, one that boosts the faculty's momentum and guarantees its leading role in the university's future.



Yas Island Marina Hotel, Abu Dhabi, UAE

As an important addition to the campus, there is an equal need for diversity and identity in the architecture of the new faculty building. Asymptote will develop the building's architectural identity to enhance the experience of its occupants and to respect its immediate surroundings. To accomplish this, it will be necessary to accommodate a diversity of spaces within a single work of architecture ranging from the public to the private. Asymptote has a proven track record with this particular issue, most notably represented in the designs for the Columbia University School of the Arts and the Strata Tower.

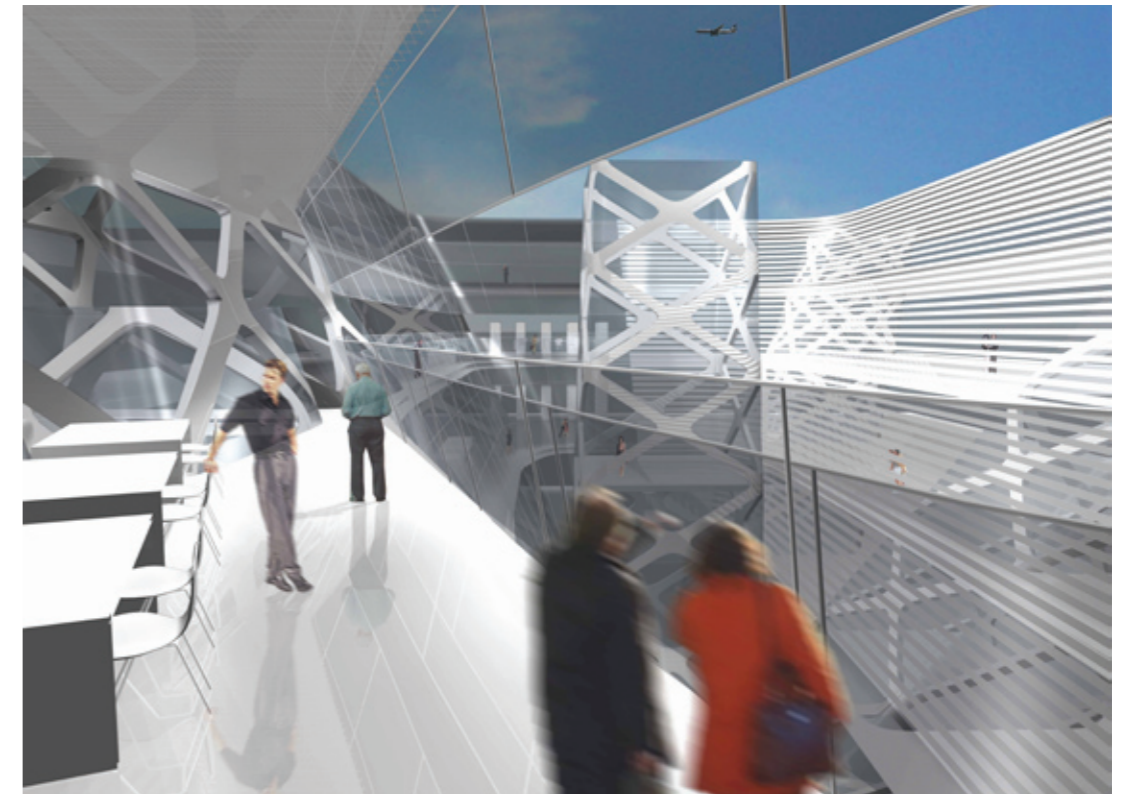
The new Columbia University School of the Arts offers a world-class facility that combines the assets of the academic community and the surrounding neighbourhoods. Asymptote's proposed design expands the current School of the Arts, while consolidating its satellite locations under one roof. By establishing a public presence at ground-level, the project establishes a connection with nearby arts institutions and the larger artist community. For this reason, the proposed design features an interweaving of the public urban realm and the School of the Arts by opening up the street-level facade for gallery, performance and studio activities. At the centre of the building a vertical zone connects other public functions, such as theatre performance, exhibition space, and leads to a roof landscape with an amphitheatre, sculpture garden, and space for multi-media performance. A strong link is established between the old and new buildings through the creation of a common, multi-use cafe space. Within the school itself, the proposal fosters a creative and vital atmosphere by overlapping and sharing open spaces, which create a rich opportunity for trans-disciplinary learning and working.

Similarly, the design of the Strata Tower in Abu Dhabi cleverly negotiates many public amenities within an otherwise private residential building. Upon entering the tower, residents and guests are greeted at a reception area with several public lounges. From the lower lounge area, the reception area invitingly ushers residents and their guests into the tranquil environment of a spa. The spa provides private facilities for men and women on the entrance level and an exercise facility on the upper level. The private spa facilities for both men and women each offer sophisticated and relaxing lounge areas, private treatment rooms, dramatic vaulted steam rooms and saunas as well as showers and changing room facilities. Horizontal and vertical circulation throughout the tower is coordinated into separate paths for residents, visitors and support staff. This strategy also accommodates circulation from the ground entrance to the residential units above, as well as from the exclusive rooftop helipad to the lifestyle amenities below.

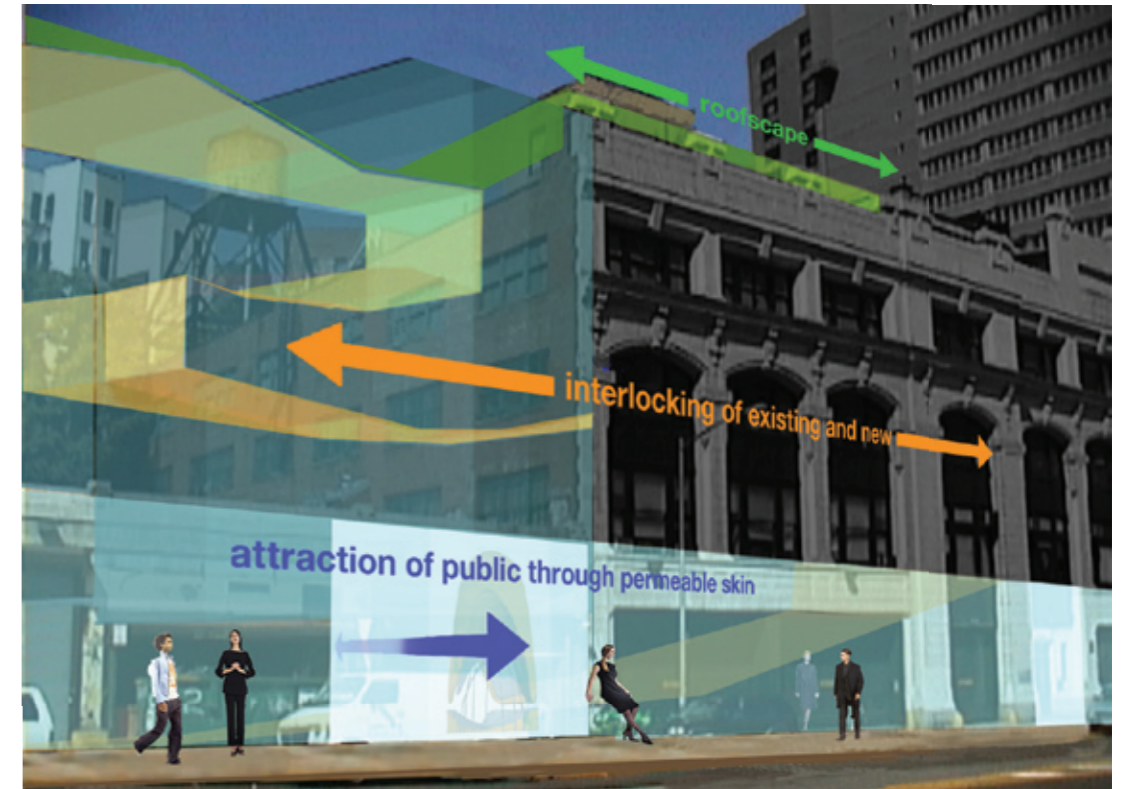
Similar to the Columbia University School of the Arts and the Strata Tower, Asymptote's vision for the design of the new faculty building includes the successful integration of diverse public spaces within a complex academic building. Ensuring a respectful relationship between private and public spaces, Asymptote believes that the integration of this diversity of space is a vital strategy for realizing a vibrant academic experience.



Above, Below: Colegio Civil Master Plan, Monterrey, Mexico



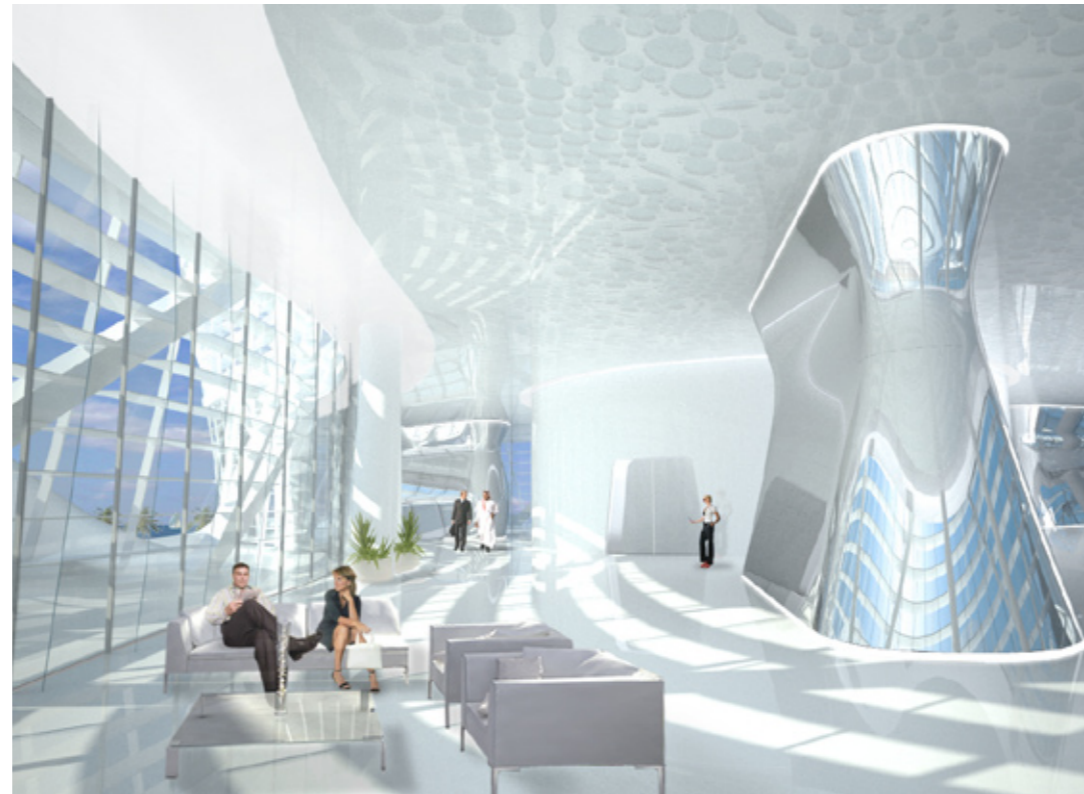
Jalisco State Library



Columbia University School of the Arts

Asymptote's vision for the Faculty of Architecture, Building and Planning at the University of Melbourne ensures an efficient and effective planning strategy that links together the various spaces of the project, between its interior and exterior, between public and private and between the building itself and the university's urban environment. Asymptote's team has incredible talent and analytical capability, in addition to a cutting-edge skill-set for implementing the latest technology for design, analysis and representation. This ensures an innovative vision for the project that permeates from the scale of the university to the scale of the individual design studio, but respects its urban context. In this sense, the program proposals are seen as design opportunities that open up exciting opportunities for designing the building's academic environments.

One project that exemplifies Asymptote's ability to integrate progressive design across many scales is 166 Perry Street, a 50,000-square-foot, eight-story, luxury condominium building set within the serene residential neighbourhood of New York City's West Village. The building, as envisioned by Asymptote, celebrates the vital and colourful urbanism that is not just particular to the West Village, but to New York City in general. Each loft-like apartment suite occupies a building corner and is wrapped within an elegantly sculptured façade of cascading glass and highly polished steel. The angled glass panels of the building's façade enhance the visual effects of 166 Perry Street's immediate environment by reflecting the surrounding streetscape comprising eighteenth and nineteenth-century row-houses. The atmospheric changes create a building façade that is in a constant state of animation and movement, a gesture that accompanies the dynamic aspects of urban life in New York City and effectively ties Asymptote's contemporary design intervention with its older urban context.



Left, Right: Strata Tower, Abu Dhabi, UAE



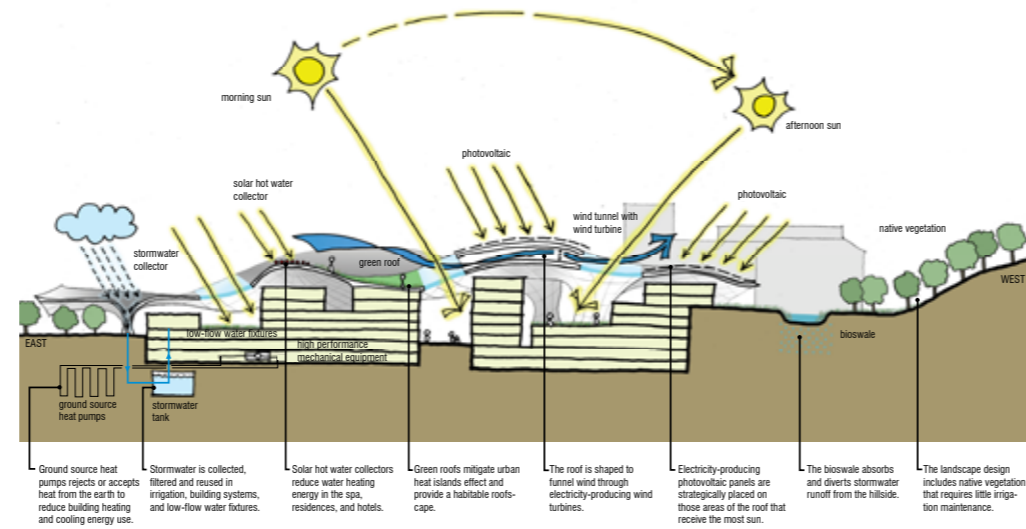
Left, Right: 166 Perry Street

Asymptote's strategy for the new Faculty of Architecture, Building and Planning building begins with the assumption that it will be a model for environmental quality and sustainability. The exterior and interior spaces will provide comfortable and pleasant spaces for the interaction of staff, visitors and residents. Implementing an integrated, sustainable vision of spatial planning, material use and ecological footprint, the new faculty building, as envisioned by Asymptote, will be a new benchmark for sustainable design.

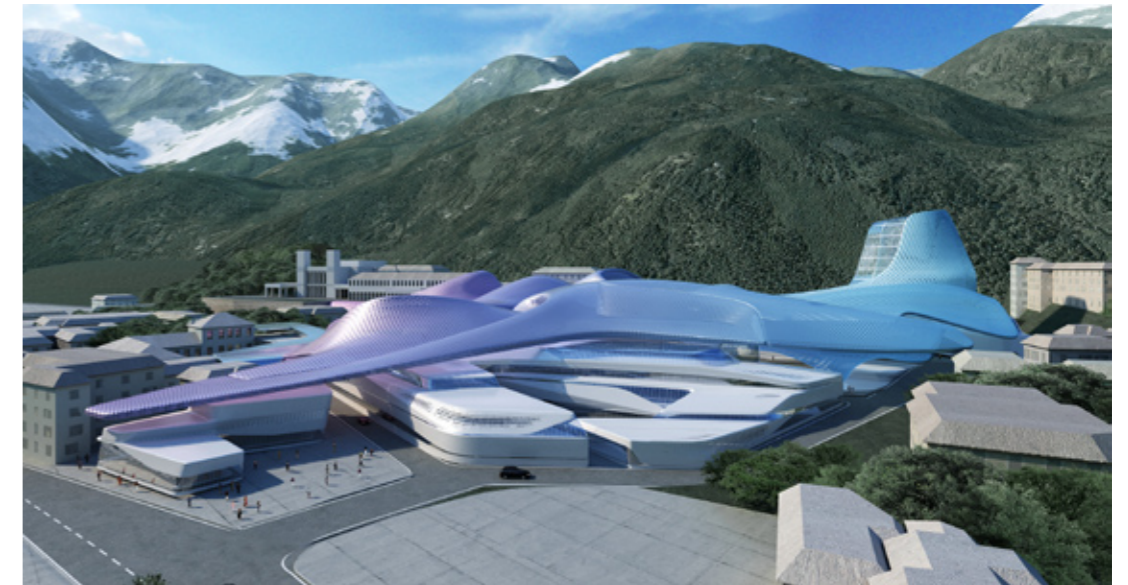
An example of integrated sustainable strategies is evident in Asymptote's design for the Strata Tower, an innovative, forty-story luxury residential building in Abu Dhabi, UAE. The Strata Tower was designed using techniques and advanced parametric modelling tools from the onset of the design process to the construction phase. The building's design emerged from many sustainable factors including economies of production, fabrication and a special consideration given to the environment. Sophisticated computer modelling tools were used to generate the building's intelligent, environmentally responsive louver system that shades the entire building skin like a veil as it is held in a unique, cantilevered exoskeleton structure.

Similarly, Asymptote's design for the Penang Global City Centre (PGCC), a one-million-square-meter highly mixed-use development in Penang, Malaysia, also incorporates the latest in sustainable design and engineering technologies. As an award-winning "carbon zero" design-scheme, the PGCC includes building-integrated wind turbines, high-performance façade engineering and design with integral thin-film photovoltaics, high-efficiency central mechanical systems, comprehensive storm water management and water recycling. The incorporation of these site-wide strategies into Asymptote's design represents the highest commitment to the creation of energy-efficient and environmentally conscious architecture.

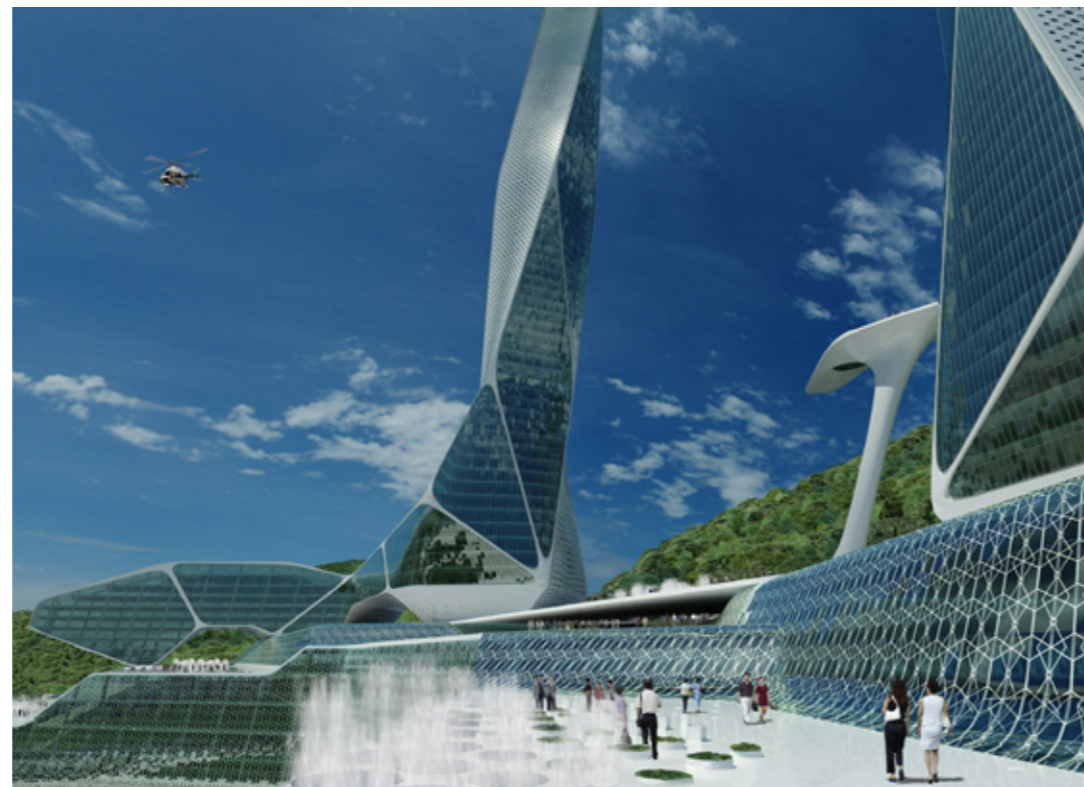
Asymptote's vision for the new faculty building is that it will not only meet the strictest standards for sustainability, but actually surpass them. Accomplishing this feat will not be easy, but Asymptote believes that sustainability as a singular concept is not truly sustainable. However, as an integrative strategy applied throughout the building's design and coordinated by the world's leading environmental experts, Asymptote's design will surpass expectations and establish the new faculty building as the premier example of sustainability worldwide.



Atelier 10 Environmental Analysis of New Thermal Complex "San Pellegrino Terme", San Pellegrino, Italy



New Thermal Complex "San Pellegrino Terme", San Pellegrino, Italy



Left, Right: Penang Global City Center, Penang, Malaysia



Team Organization

Hani Rashid and Lise Anne Couture, founders and principals of Asymptote Architecture, are leading architectural practitioners of their generation whose innovative work and academic contributions have received international recognition. Since Asymptote's founding in 1989, the firm has been at the forefront of technological innovation in the field of architecture and design and garnered praise for visionary building designs, master plans, art installations, exhibition and product design and digital environments.

Asymptote is currently working on a broad range of commissions at sites in the United States, Europe and Asia including a 100,000-square-meter master plan in Bergamo, Italy; two commercial office towers in Budapest, Hungary and the World Business Center Solomon Tower in Busan, South Korea, a skyscraper that will be among the tallest buildings in Asia at 560m. Also in progress are the Penang Global City Center (PGCC), a one-million-square-meter cultural, hotel and performing arts complex in Penang, Malaysia and two contemporary art pavilions commissioned by The Guggenheim Foundation for the Cultural District of Saadiyat Island in Abu Dhabi, UAE. Other recent competition proposals from Asymptote include a large-scale master plan and landmark tower design for the Yongsan International Business District in Seoul, South Korea; the winning entry for an iconic, forty-story corporate headquarters in Tbilisi, Georgia; a design for the Dubai International Financial Center, a 146-story building that punctuates that city's skyline; an exhibition and music hall in Vitoria, Spain; and a dramatic design for a new Guggenheim Museum in Guadalajara, Mexico.

Projects designed by Asymptote now under construction include 166 Perry Street, a high-end residential building in New York City, and two projects in Abu Dhabi: the Strata Tower, an innovative, forty-story residential tower, and a luxury hotel adjacent to the new Formula 1 racetrack. Completed projects in recent years include the award-winning HydraPier Pavilion in Haarlemmermeer, The Netherlands; the Guggenheim Virtual Museum; the New York Stock Exchange Advanced Trading Floor and the design and creation of new brand identities for clients such as BMW and Alessi.

All of Asymptote's work has been widely published and is included in various private and public collections including The Museum Of Modern Art in New York, the Pinakothek der Moderne in Munich, the San Francisco Museum of Modern Art, the Centre Pompidou in Paris and the Frac Centre in Orléans, France. In 2004 Rashid and Couture were presented with the coveted Frederick Kiesler Prize for Architecture and the Arts in recognition of exceptional contributions to the progress and merging of art and architecture.

Design Team

Hani Rashid
Design Principal

Hani Rashid is the Design Principal at Asymptote who works directly with clients to gain a firsthand understanding of a project's design intentions and opportunities and leads a design team to realize the project's creative vision. Rashid has almost twenty years of experience leading design teams on various projects from concept to realization and has achieved a high level of internationally recognized design excellence.

In 2000 Hani Rashid co-represented the United States at the 7th Venice Architecture Biennale, and in 2004 he was awarded the Chair to the Cátedra Luis Barragán in Monterrey, Mexico. He received a Bachelor of Architecture from Carleton University in Canada in 1983 and a Master of Architecture from Cranbrook Academy of Art in Bloomfield Hills, Michigan in 1985.

Lise Anne Couture
Managing Principal

Lise Anne Couture is the Managing Principal at Asymptote in charge of administering the firm and overseeing the day-to-day operations of the design practice. She coordinates with all of the project managers and design teams to ensure that the integrity of a project's creative design vision is carried through all phases of the design process and that all budget goals and scheduling milestones are achieved.

Lise Anne Couture has been a New York Foundation of the Arts Fellow. She is a New York State Registered Architect and a member of the AIA. She sits on the Board of Directors of the Architectural League of New York, the Advisory Board of the Builder's Association and serves on the federal government's GSA Design Excellence Peer Review Board.

She received a Master of Architecture from Yale University in 1986.

Client References

Michael Cox
Strata Tower
Development Director
Al Raha Beach Development
ALDAR Properties PJSC
P.O. Box 51133, Abu Dhabi, UAE
Telephone +971 26 22 23 26 x 300
Site office number 009712 5561501 Ext. 200
mcox@aldar.com

Charles Blachman
166 Perry Street
Perry Street Development Corporation
161 Chrystie Street, 2nd floor
New York, NY 10002
USA
+1 212-505-5270
cblachman@aol.com

Choi, Young-Myoung
World Business Center Solomon Tower
President
Solomon Group
Shinwon B/D 4F 402, Seocho-dong 1545-9
Seocho-gu, Seoul, Korea
Telephone +82 2 5855 422
Mobile +011 889 5366
imjoy619@hanmail.net

License & Liability Insurance



ACORD CERTIFICATE OF LIABILITY INSURANCE		DATE (MM/YY)	STATION
PRODUCER Petty Burton Associates Arthur J. Gallagher Risk Management Services, Inc. 55 Park Street Montclair, NJ 07042		3/6/2009	ASYMARC-01 STA1
INSURED Asymptote Architecture PLLC 45-46 21st Street Long Island City, NY 11101		INSURERS AFFORDING COVERAGE INSURER A: Continental Casualty Company INSURER B: INSURER C: INSURER D: INSURER E:	NAIC # 20443
COVERAGES			
THE POLICIES OF INSURANCE LISTED BELOW HAVE BEEN ISSUED TO THE INSURED NAMED ABOVE FOR THE POLICY PERIOD INDICATED. NOTWITHSTANDING ANY REQUIREMENT, TERM OR CONDITION OF ANY CONTRACT OR OTHER DOCUMENT WITH RESPECT TO WHICH THIS CERTIFICATE MAY BE ISSUED OR MAY PERTAIN, THE INSURANCE AFFORDED BY THE POLICIES DESCRIBED HEREIN IS SUBJECT TO ALL THE TERMS, EXCLUSIONS AND CONDITIONS OF SUCH POLICIES. AGGREGATE LIMITS SHOWN MAY HAVE BEEN REDUCED BY PAID CLAIMS.			
DESCRIPTION / TYPE OF INSURANCE	POLICY NUMBER	POLICY EFFECTIVE DATE (MM/YY)	POLICY EXPIRATION DATE (MM/YY)
<input type="checkbox"/> COMMERCIAL GENERAL LIABILITY <input type="checkbox"/> CLAIMS MADE <input type="checkbox"/> OCCUR GENL. AGGREGATE LIMIT APPLIED PER POLICY: <input type="checkbox"/> NET <input type="checkbox"/> LOC			
<input type="checkbox"/> AUTOMOBILE LIABILITY ANY AUTO ALL OWNED AUTOS SCHEDULED AUTOS HIRED AUTOS NON-OWNED AUTOS			
<input type="checkbox"/> GARAGE LIABILITY ANY AUTO <input type="checkbox"/> EXCESS/UMBRELLA LIABILITY <input type="checkbox"/> OCCUR <input type="checkbox"/> CLAIMS MADE <input type="checkbox"/> DEDUCTIBLE \$ <input type="checkbox"/> RETENTION \$			
WORKERS COMPENSATION AND EMPLOYERS LIABILITY ANY PROPRIETOR/PARTNER/EXECUTIVE OFFICER/MEMBER (EXCLUDED) E. PER. DISEASE UNDER SPECIAL PROVISIONS BELOW OTHER			
A Architects/Engineers Professio	AEH276198124	1/30/2009	1/30/2010
DESCRIPTION OF OPERATIONS / LOCATIONS / VEHICLES / EXCLUSIONS ADDED BY ENDORSEMENT / SPECIAL PROVISIONS			
CERTIFICATE HOLDER Specimen		CANCELLATION SHOULD ANY OF THE ABOVE DESCRIBED POLICIES BE CANCELLED BEFORE THE EXPIRATION DATE THEREOF, THE ISSUING INSURER WILL ENDEAVOR TO MAIL 0 DAYS WRITTEN NOTICE TO THE CERTIFICATE HOLDER NAMED TO THE LEFT, BUT FAILURE TO DO SO SHALL IMPOSE NO OBLIGATION OR LIABILITY OF ANY KIND UPON THE INSURER, ITS AGENTS OR REPRESENTATIVES. AUTHORIZED REPRESENTATIVE: <i>Xiomara Stephens</i>	
ACORD 25 (2001/08) © ACORD CORPORATION 1988			



HydraPier Pavilion, Haarlemmermeer, The Netherlands



World Business Center Solomon Tower, Busan, South Korea

Selected Awards

- American Architecture Award, Chicago Athenaeum Museum of Architecture and Design · 2008
- First Prize, Vake Multifunctional Center Competition · 2008
- AIA New York Chapter Design Award, Interior Architecture Category · 2007
- First Prize, World Business Center Busan Competition · 2007
- First Prize, Penang Turf Club Master Plan Competition · 2006
- AIA New York Chapter Design Award, Interior Architecture Category · 2005
- Frederick Kiesler Prize for Architecture and the Arts · 2004
- American Architecture Award, Chicago Athenaeum Museum of Architecture and Design · 2004
- Dupont Benedictus Awards · 2003
- AIA New York Chapter Design Award, Architecture Category · 2002
- Prize Dedalo Minosse · 2002
- First Prize, Floriade Municipal Pavilion Competition · 2001
- National Design Awards Finalist, Cooper-Hewitt, National Design Museum · 2001
- Artist in Residence - CCA San Francisco · 2000
- Emerging Voices: Architectural League of New York · 1999
- Annual Danish Building Prize · 1996
- Second Prize, Paper Art Biennale · 1995
- 40 Under 40, Interiors Magazine · 1994
- New York Foundation for the Arts Fellowship · 1992
- 30 Under 30, Interiors Magazine · 1989
- First Prize, Los Angeles West Coast Gateway Competition · 1989

Contact Information

1145 46th Avenue
LIC, New York 11101
telephone + 1 212 343 7333
facsimilie + 1 718 937 3320
www.asymptote.net

Contact:
Josh Dannenberg
telephone + 1 212 343 7333 ext. 3011
dannenberg@asymptote.net